

3% GUARANTEED YIELD OR FLEXIBLE RETURN



· MADEIRA ·



WHY PORTUGAL?



SAFETY AND STABILITY

Portugal has a stable political and economic climate and is constantly ranked as one of the safest countries in the world.



VISA FREE ACCESS

Free Travel to Europe's Schengen Area and access to 188 worldwide countries.



REMOTE AND EFFICIENT GOLDEN VISA PROGRAM

Begin the process anywhere in the world and obtain your residency 6-9 months after application.



CITIZENSHIP

Eligible for citizenship after 5 years.



RESIDENTIAL REQUIREMENTS

Merely 35 days in 5 years.



FAMILY

Spouse and dependents are eligible to apply.



EDUCATION

Free access to high education standards.



HEALTHCARE

Free access to World class health system.



ISLAND

Madeira Islands, known for their breathtaking landscapes from volcanic mountains to magnificent, lush colored flowers and forests, boasting a subtropical weather, delicious foods and flavored wines. Madeira is often known as the eternal pearl of the Atlantic.

Discovered in the 1400's by the Portuguese explorers, Madeira situated in the Atlantic Ocean off the African Coast close to the Canarian Islands is quite close to Europe, more precisely a mere 90-minute flight from Lisbon.

By virtue of the excellent geographical location, the Islands have a balmy weather with moderate humidity with pleasant average temperatures of 25°C (77° F) in summer and 17°C (62.6°F) in winter. Additionally, the sea temperature is mild in consequence of the Gulf stream averaging 22°C (71.6° F) in the summer and 18 °C (64.4° F) in the winter.

Living in Madeira is simply living the desired "Island life" fulfilled with unforgettable daily experiences.

For the sea lovers the Island offers activities such as diving, fishing, surfing, body board, windsurfing, sailing or simply swimming. However, within half an hour, the mountains can be reached and activities such as golf, mountain hiking, cross trailing, paragliding, bird watching, motocross can be practiced.

Also, much worth to mention the Island has its own Rally championship during the year which is a major tourist attraction.

1010



MADEIRA



· MADEIRA ·

Madeira is not only able to fill your heart and soul but also will awaken your senses, as the Islands are filled with flavours and many specialities including its renowned finest Madeira wine, rum, liquors, the famous poncha, offering residents and tourists alike a wide range of choices. You can expect to find all amenities as in Lisbon, London, New York or Paris.

There are several Michelin-starred restaurants in Madeira! The Islands become very popular during the 80 and 90's for their nature untouched nature splendour, having been visited predominantly by elder northern Europeans, seeking a nature retreat away from the pollution and crowded destinations.

However, given the recent international popularity of Madeira, the region has been growing over the past years much to its splendour and Madeira dazzles among many worldwide competitions, being elected for the 7th time (2015- 2021) as the World's Leading Island Destination, by World Travel Awards, holding the Guinness World Record for the Largest Pyrotechnic Performance in the World from 2006 – 2010.

Also, as the hometown of the most famous football player in the World Cristiano Ronaldo, millions of fans have been discovering this hidden gem as many travel to Madeira exclusively to visit his own Museum. From little apart hotels, luxury classy antique resorts, nature eco resorts, the tourism is booming and, as consequence of post-Covid world, the Madeira Islands are now a new home base for many millennials. When comparing to other digital nomad famous spots, Portugal ranks highly for its safety and stable political system positioning itself ahead of others.

NORTH COAST

· MADEIRA ·

PORTO MONIZ



SOUTH COAST

· MADEIRA ·

CÂMARA DE LOBOS

An aerial photograph of the town of Câmara de Lobos in Madeira, Portugal. The town is built on a steep hillside overlooking the ocean. The hillside is covered with terraced vineyards, and the town features numerous buildings with red-tiled roofs. The ocean is a deep blue, and several small boats are visible in the water. A line points from the text 'CÂMARA DE LOBOS' to the town.



· MADEIRA ·

The Region has invested in tourism along the years as this is their main source of revenue and subsequently in the many attractions such as the Christmas, Flower, Wine, Carnival, and Atlantic Festivals. Hundreds are expected to visit Madeira in these special seasons.

The occupancy rate during Christmas and New Year's Eve is of 90-100% in several hotel units, yet due to the balmy weather and other many attractions along the year the Islands are sought not in a specific month.

This year, Madeira has registered over 1 million stays in one single month (July) resulting in a 68,2% increase comparing to July 2019.

The agriculture of Madeira is characterized by the main production of wine, potatoes, flowers and sugar, additionally there are industrial activities such as production of pasta, dairy products, beer, cement and others.

Funchal I offers the investor a granted rental revenue for its strategic location.

FLOWER FESTIVAL



RALLY





· MADEIRA ·

NEW YEAR'S EVE

ZOOMED ISLAND



MAINLAND



MADEIRA

MADEIRA ISLAND



Average 3hour flight from European destinations (UK, Benelux, Germany, Austria, Czech Republic, France, Spain)



90 min from Lisbon (Flight)



15min airport



30min North Coast



10min Hospital



THE PROJECT





· MADEIRA ·

Poncha is located in the city of Funchal, the capital of Madeira Islands, only fifteen minutes from the Madeira International Airport, that offers daily flights from many European cities, the project delivers a unique living experience, at the very heart of the city, surrounded by antique museums, cultural centres, old churches, wine lodges, trendy restaurants, hotels, schools, and amenities such as medical clinics, pharmacies, retail shops and many others.

Within the city, the daily life is easily carried out by foot, in a short distance the main port, the marina and other key locations can be easily reached.

From picking up the freshest fruits and vegetables from the main local market heading to a lunch with a stunning view of the yacht and cruises that are constantly passing through Madeira in the marina, culminating in a breathtaking sunset on the east side.

The parish of Sé, is highly valued in terms of rentability due to its proximity to companies, schools, and others.

Poncha's prime aspects of its architecture project are the aristocracy traces that it boasts dating from the beginning of the 20th century. These allowed for the leading architects to take advantage of the existing heritage traces where in its redesign maintained an extraordinary amount of natural light on all floors and apartments.

Poncha is projected as a private condominium, with a small garden in the front area and it offers 19 spacious apartments, mainly studio to one-bedroom apartments with private terraces or balconies, all totally refurbished with an open kitchen concept and living room, suites, bathroom, and bedroom.

Poncha offers the highest value to buy a property on the Islands, given its higher demand and abundance of services.

STUDIO

· MADEIRA ·



BATHROOM

· MADEIRA ·



PRIVATE BALCONY

MADEIRA



TERRACE

MADEIRA





FLOOR PLAN



P000 - GROUND FLOOR

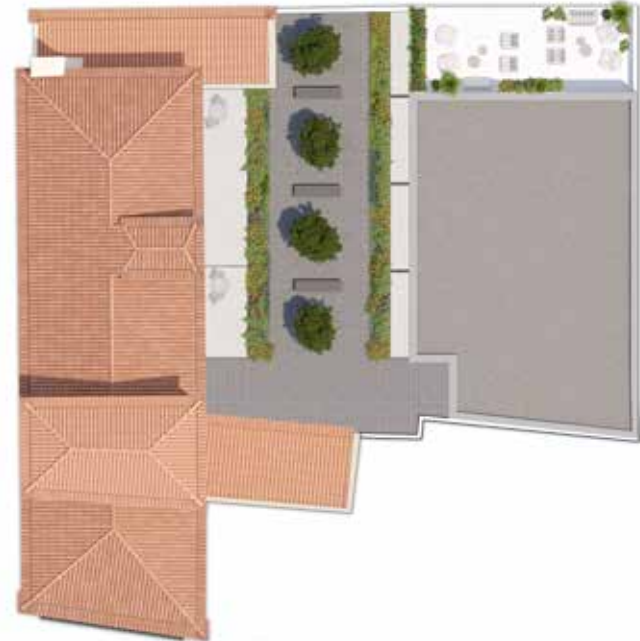


P01 - 1ST FLOOR

PLANS



P02 - 2ND FLOOR



3RD - FLOOR

PLANS

3% GUARANTEED YIELD OR FLEXIBLE RETURN



· MADEIRA ·

